

# TightLines Designs

small homes for **BIG LIVING**



## Ansley I

square footage. . . . . **1170 sq ft**  
 bedrooms. . . . . **3**  
 bathrooms. . . . . **2**

width. . . . . **22' 0"**  
 depth. . . . . **45' 0"**  
 1st floor ceiling height. . . . . **9' 0"**  
 2nd floor ceiling height. . . . . **8' 0"**  
 roof pitch. . . . . **12/12**

1st floor master suite  
 Handicap adaptable  
 Basement adaptable  
 Garage adaptable  
 NC historic approval

foundation. . . . . **crawl space**  
 exterior framing. . . . . **2x4**

## Pricing

Visit our website for pricing information  
[www.tightlinesdesigns.com](http://www.tightlinesdesigns.com)

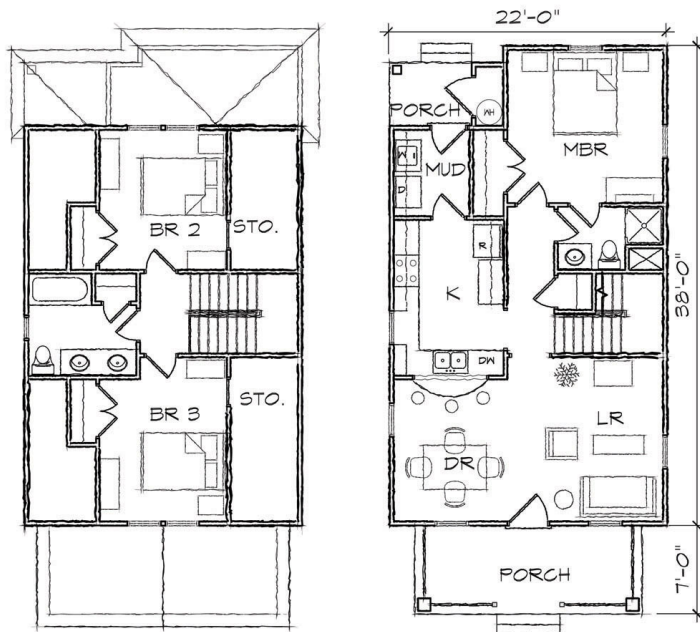
[www.tightlinesdesigns.com](http://www.tightlinesdesigns.com)

119 East Hargett Street, Suite 300  
 Raleigh, NC 27601

**800-958-0012 toll free**

919-834-3600 phone

919-829-0860 fax



To order, email [info@tightlinesdesigns.com](mailto:info@tightlinesdesigns.com) or call 1-800-958-0012.