

TightLines Designs

small homes for **BIG LIVING**



Ansley III

square footage. 1532 sq ft
 bedrooms. 3
 bathrooms. 2.5

width. 24' 4"
 depth. 51' 0"
 1st floor ceiling height. 9' 0"
 2nd floor ceiling height. 8' 0"
 roof pitch. 12/12

1st floor master suite
 Handicap adaptable
 Basement adaptable
 Garage adaptable
 NC historic approval

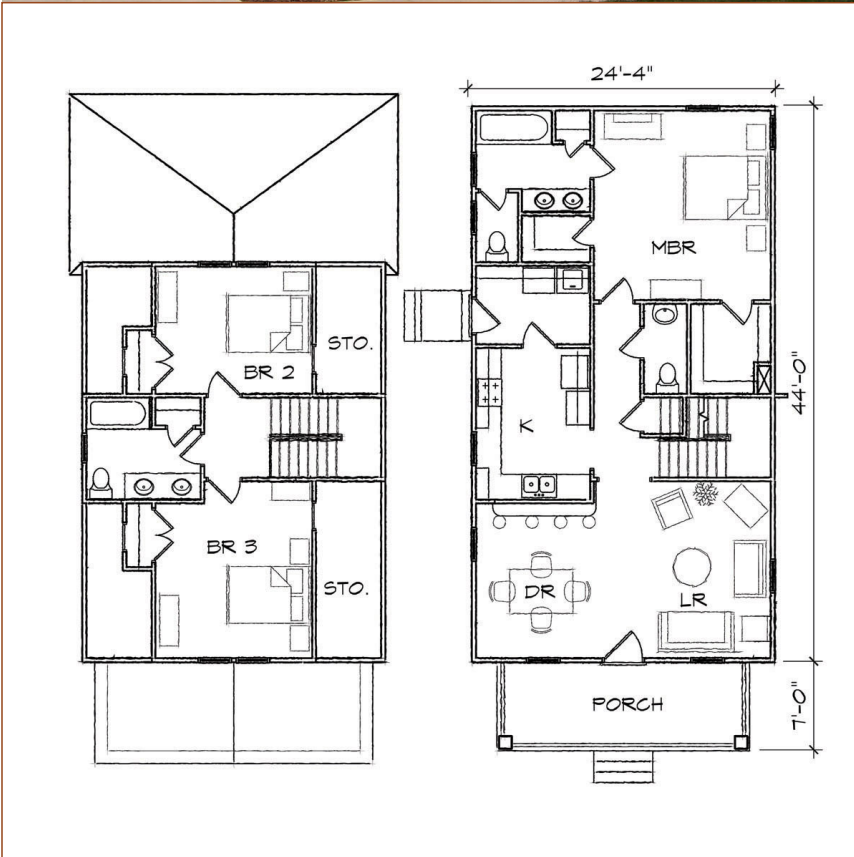
foundation. crawl space
 exterior framing. 2x4

Pricing

Visit our website for pricing information
www.tightlinesdesigns.com

www.tightlinesdesigns.com
 119 East Hargett Street, Suite 300
 Raleigh, NC 27601

800-958-0012 toll free
 919-834-3600 phone
 919-829-0860 fax



To order, email info@tightlinesdesigns.com or call 1-800-958-0012.