

TightLines Designs

small homes for **BIG LIVING**



Ansley II Accessible

square footage. 1336 sq ft
 bedrooms. 3
 bathrooms. 2

width. 24' 0"
 depth. 49' 0"
 1st floor ceiling height. 9' 0"
 2nd floor ceiling height. 8' 0"
 roof pitch. 12/12

1st floor master suite
 Handicap accessible
 Garage adaptable
 NC historic approval

foundation. crawl space
 exterior framing. 2x4

Pricing

Visit our website for pricing information
www.tightlinesdesigns.com

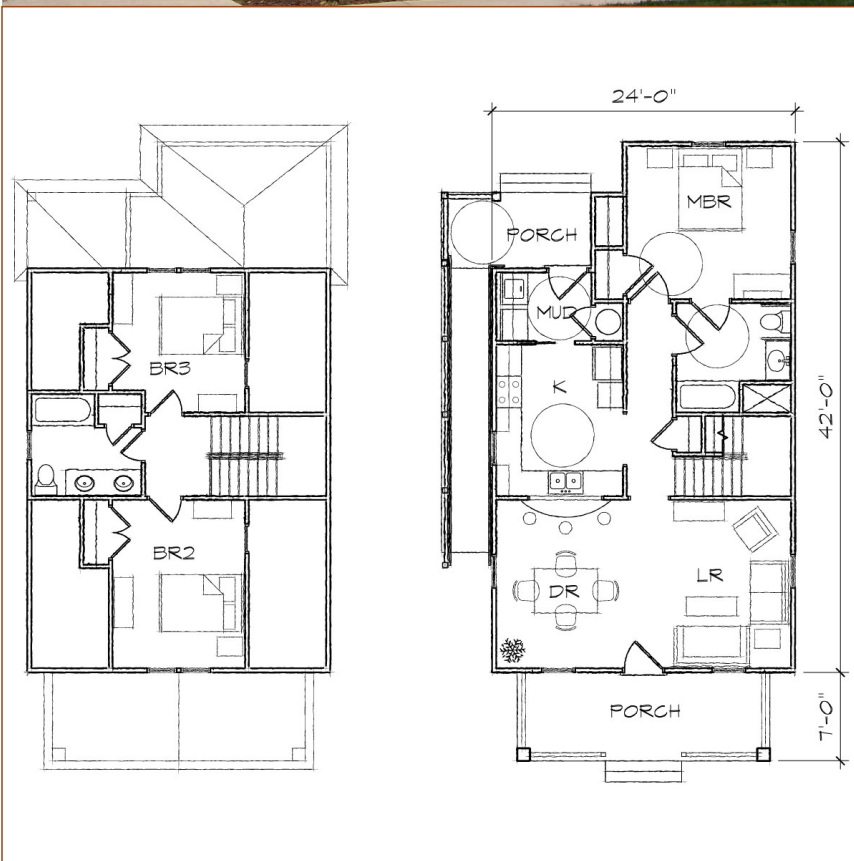
www.tightlinesdesigns.com

119 East Hargett Street, Suite 300
 Raleigh, NC 27601

800-958-0012 toll free

919-834-3600 phone

919-829-0860 fax



To order, email info@tightlinesdesigns.com or call 1-800-958-0012.