

TightLines Designs

creating great places to live

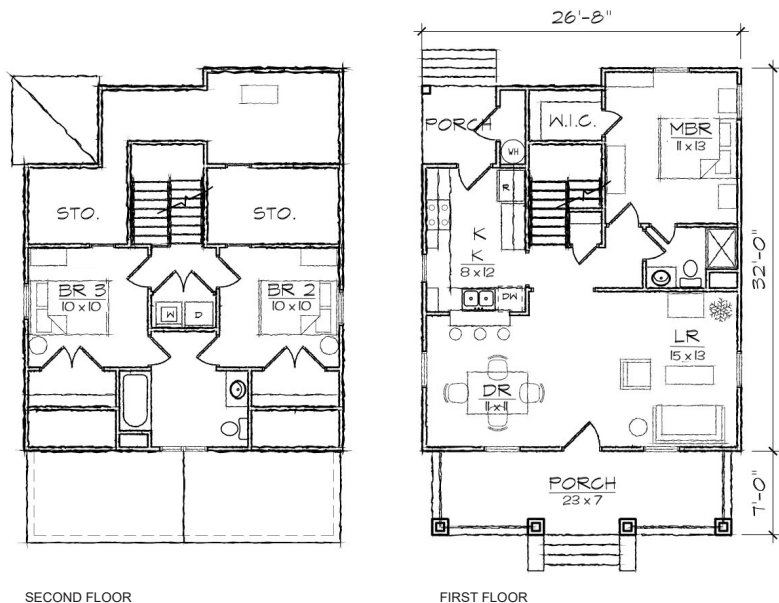


Brookestone I

This one and one half story bungalow style home of 1203 square feet features a large open living and dining area and a first floor master bedroom suite. The plan includes a total of three bedrooms, two full bathrooms and an L-shaped galley kitchen with a breakfast bar that opens to the dining room. The second floor offers two bedrooms, a shared full bathroom, the laundry area, and abundant easily accessible storage.

The Arts and Crafts inspired exterior offers a side to side gable roof and a front shed dormer, covered front and rear porches, and an exterior storage room. At 26'-8" it is ideally suited for a narrow lot.

Also available: Brookestone II, Brookestone III.
Modifications available upon request.



Specifications

bedrooms: 3	square footage: 1203	roof pitch: 9/12
bathrooms: 2	1st floor ceiling: 9'	width: 26' 8"
stories: 2	2nd floor ceiling: 8'	depth: 39'