

# TightLines Designs

creating great places to live



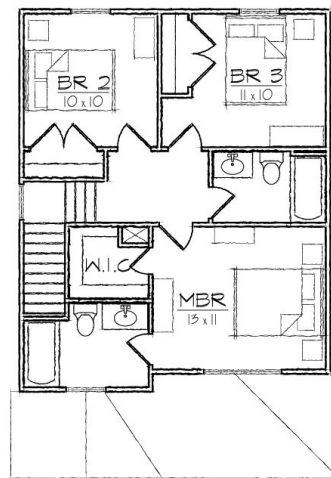
## Fisher I

This two story turn of the century style house of 1190 square feet features a large open living and dining area, spacious kitchen, and a private master bedroom suite.

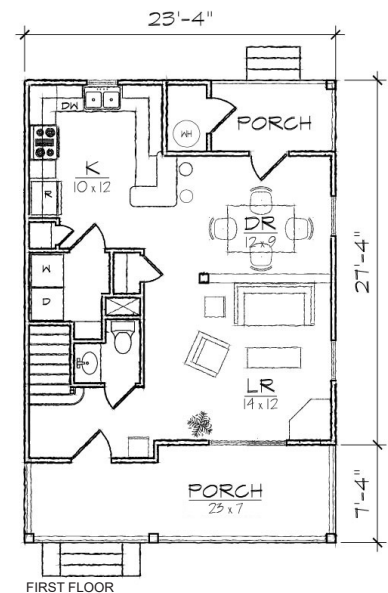
The plan includes a total of three bedrooms, two full bathrooms, a powder room, a laundry room, and a U-shaped kitchen with a breakfast bar that opens to the dining room.

The Queen Anne inspired exterior offers a hip roof, a full front porch with a hip roof and gabled entry, covered rear porch, and exterior storage room. At 23'4" in width, it is ideally suited for a narrow lot.

Also available: Fisher II, Fisher III.  
Modifications available upon request.



SECOND FLOOR



FIRST FLOOR

### Specifications

bedrooms: **3** square footage: **1190** roof pitch: **8/12**  
 bathrooms: **2.5** 1st floor ceiling: **9'** width: **23' 4"**  
 stories: **2** 2nd floor ceiling: **8'** depth: **34' 8"**