

TightLines Designs

creating great places to live



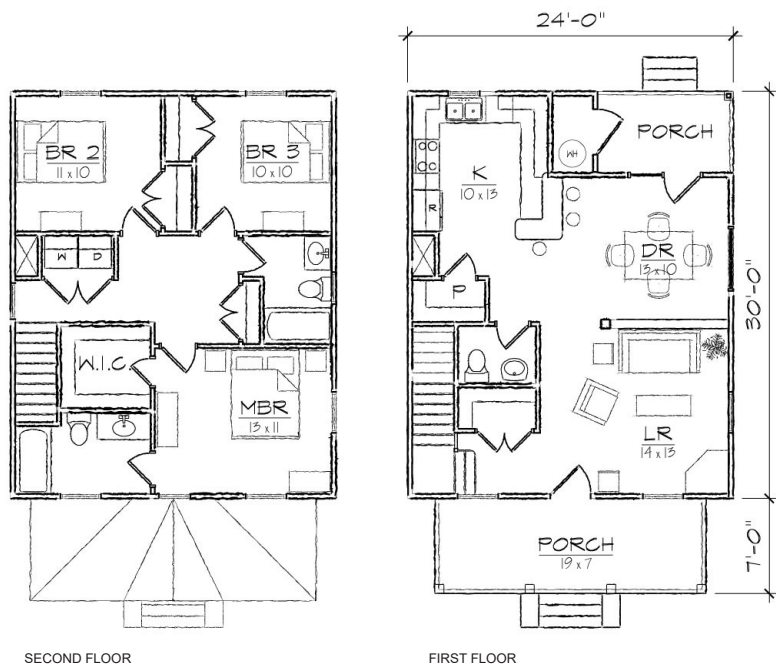
Fulton II

This two story Prairie style house of 1329 square feet features a large open living and dining area, spacious kitchen, private master bedroom suite.

The plan includes a total of three bedrooms, two full bathrooms, a laundry room, a powder room, and U-shaped kitchen with a breakfast bar that opens to the dining room.

The Craftsman inspired exterior offers a gable roof with an accent of shingles, a full front porch covered with a hip roof and gabled entry, covered rear porch, and exterior storage room. At 24 ft in width, it is ideally suited for a narrow lot.

*Also available: Fulton I, Fulton III.
Modifications available upon request.*



Specifications

bedrooms: **3** square footage: **1329** roof pitch: **8/12**
 bathrooms: **2.5** 1st floor ceiling: **9'** width: **24'**
 stories: **2** 2nd floor ceiling: **8'** depth: **37'**