

TightLines Designs

creating great places to live



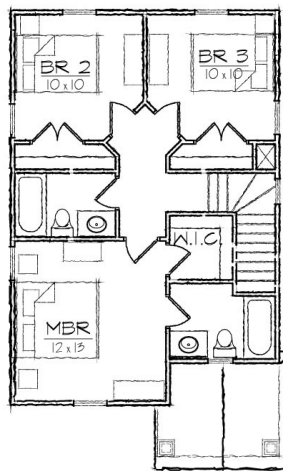
Martin I

This two story Queen Anne style house of 1188 square feet features a spacious living and dining room area and a private master bedroom suite with a walk-in closet.

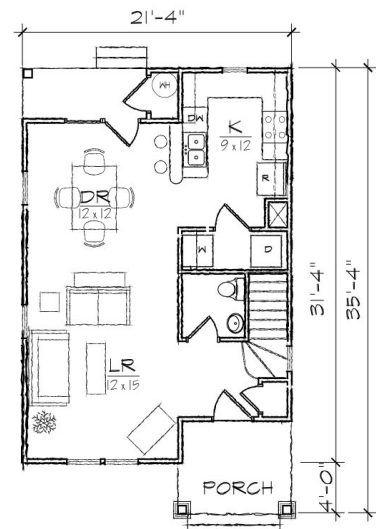
This open floor plan includes a total of three bedrooms, two full bathrooms, a powder room, a laundry room, and U-shaped kitchen with a breakfast bar that opens to the dining room.

The historically inspired exterior offers a dutch gabled roof, covered front and rear porches, and exterior storage room. At 21'-4" ft in width it is ideally suited for a narrow lot.

Also available: *Martin II, Martin III.*
 Modifications available upon request.



SECOND FLOOR



FIRST FLOOR

Specifications

bedrooms: **3** square footage: **1188** roof pitch: **8/12**
 bathrooms: **2.5** 1st floor ceiling: **9'** width: **21' 4"**
 stories: **2** 2nd floor ceiling: **8'** depth: **35' 4"**