

TightLines Designs

creating great places to live



Whitney 2BR

This single story Folk Victorian style house of 956 square feet features a spacious living room and a separate dining area.

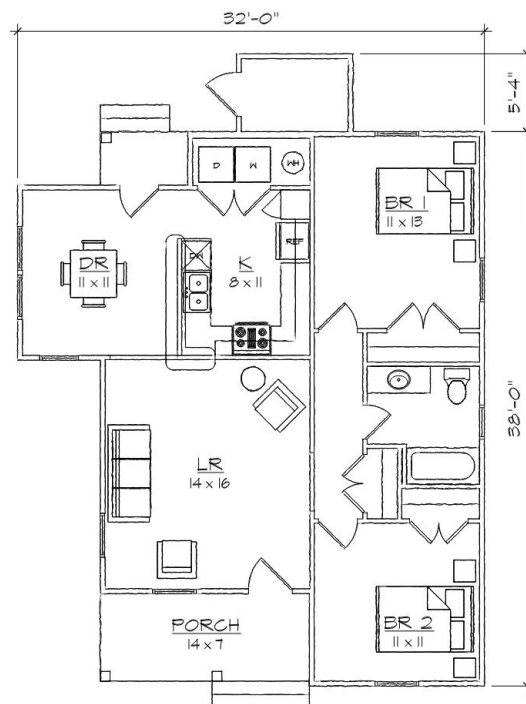
This open floor plan includes a total of two bedrooms, one full bathroom, laundry area, and centralized U-shaped kitchen with a breakfast bar that opens to the dining room.

The historically inspired exterior offers a double gable roof with a side gable, covered front and rear porches, and exterior storage room.

*Also available: Whitney I, Whitney II, Whitney III.
Modifications available upon request.*

Specifications

bedrooms: **2** square footage: **956** roof pitch: **8/12**
bathrooms: **1** 1st floor ceiling: **9'** width: **32'**
stories: **1** depth: **38'**



FLOOR PLAN