

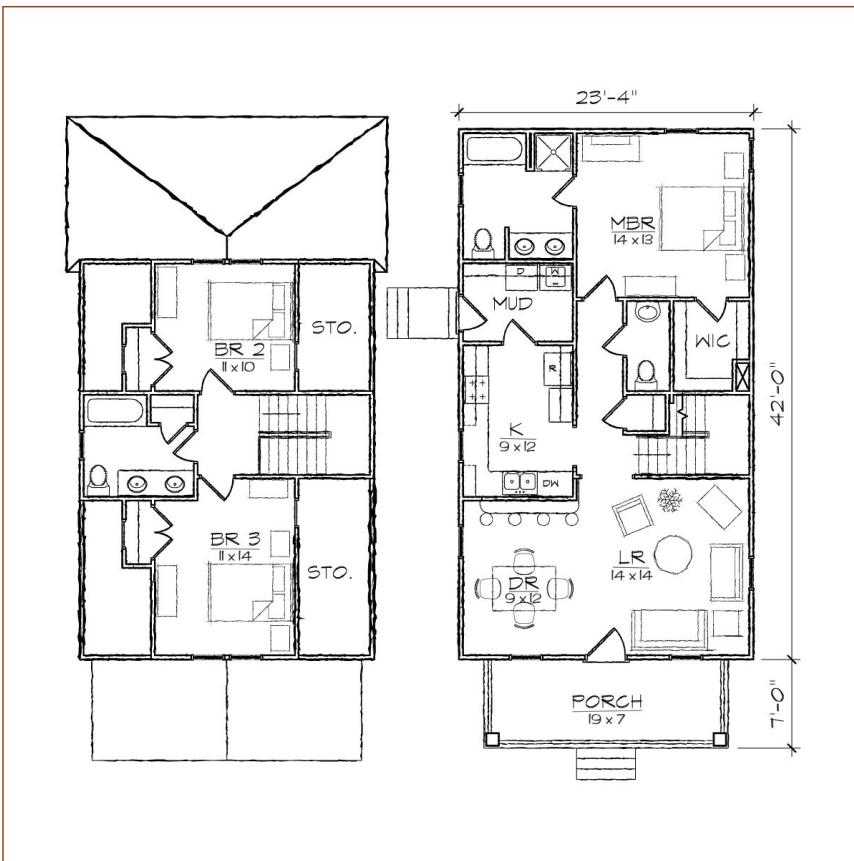
# TightLines Designs

creating great places to live



## Ansley II

square footage. . . . .	1397 sq ft
bedrooms. . . . .	3
bathrooms. . . . .	2.5
stories. . . . .	2
width. . . . .	23' 4"
depth. . . . .	49' 0"
1st floor ceiling height. . . . .	9' 0"
2nd floor ceiling height. . . . .	8' 0"
roof pitch. . . . .	12/12



This one and one half story bungalow style home of 1397 square feet features a large open living and dining area, a first floor master bedroom suite, and includes a total of three bedrooms, two full bathrooms, a laundry/mud room and an L-shaped galley kitchen with a breakfast bar that opens to the dining room. The second floor contains two bedrooms and a full bathroom, and abundant easily accessible storage. The Arts and Crafts inspired exterior offers a front gabled roof, covered front and rear porch, and exterior storage room. At 23'-4" in width, it is ideally suited for a narrow lot.

\*Contact us for more information on handicap, basement, garage, foundation, or framing modifications.