

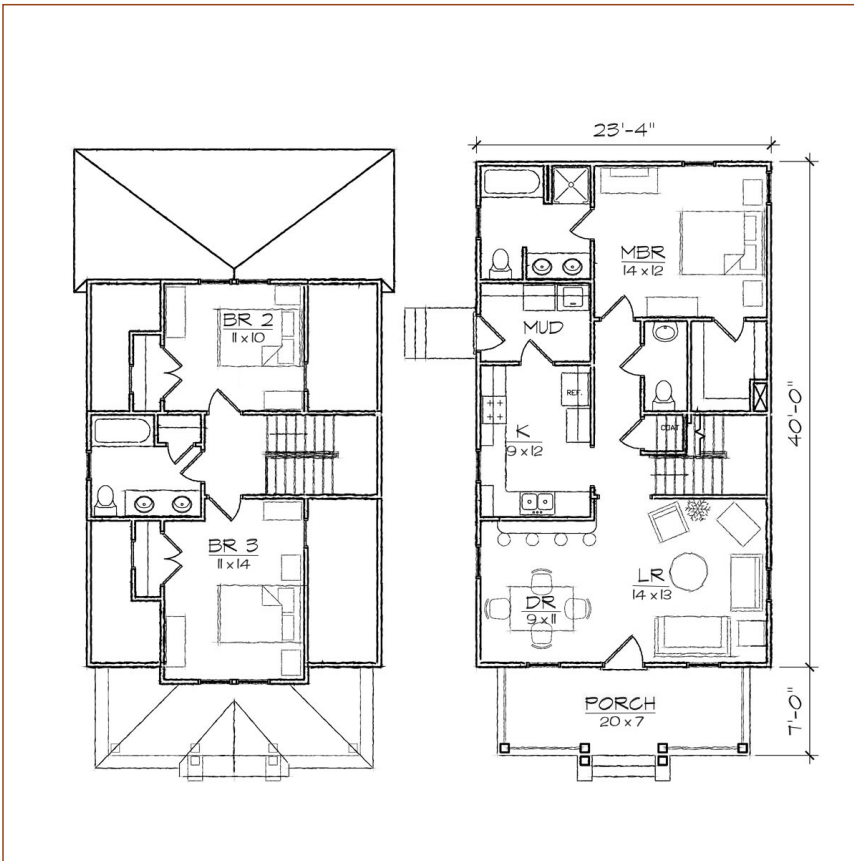
TightLines Designs

creating great places to live



Ashleigh II

square footage.	1367 sq ft
bedrooms.	3
bathrooms.	2.5
stories.	2
width.	23' 4"
depth.	49' 0"
1st floor ceiling height.	9' 0"
2nd floor ceiling height.	8' 0"
roof pitch.	12/12



This one and one half story bungalow style home of 1367 square feet features a large open living and dining area, a first floor master bedroom suite, and includes a total of three bedrooms, two full bathrooms, a powder room, a laundry/mud room, and an L-shaped galley kitchen with a breakfast bar that opens to the dining room. The second floor contains two bedrooms and a full bathroom, and abundant easily accessible storage. The Arts and Crafts inspired exterior offers a front hip roof with a projecting front gabled dormer, covered front and rear porch, and exterior storage room. At 23'-4" in width, it is ideally suited for a narrow lot.

*Contact us for more information on handicap, basement, garage, foundation, or framing modifications.