

TightLines Designs

creating great places to live

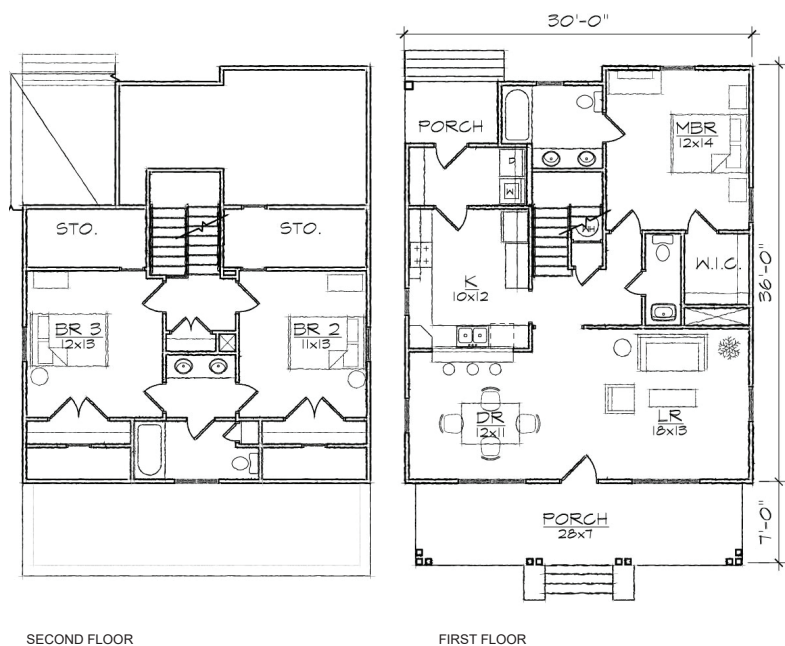


Bailey III

This one and one half story bungalow style home of 1479 square feet features a large open living and dining area and a first floor master bedroom suite. The plan includes a total of three bedrooms, two and a half bathrooms, a laundry area, and an L-shaped galley kitchen with a breakfast bar that opens to the dining room. The second floor offers two bedrooms, a “Jack & Jill” bathroom, and abundant easily accessible storage.

The Arts and Crafts inspired exterior offers a side to side gabled roof and a front gabled dormer and covered front and rear porches. At 30'-0" it is ideally suited for a narrow lot.

Also available: Bailey I, Bailey II.
Modifications available upon request.



Specifications

bedrooms: **3** square footage: **1479** roof pitch: **9/12**
 bathrooms: **2.5** 1st floor ceiling: **9'** width: **30'**
 stories: **2** 2nd floor ceiling: **8'** depth: **43'**