

TightLines Designs

creating great places to live



Fayetteville Duplex

This two story turn-of-the-century style duplex offers two units of 1193 and 1167 square feet. Each features a large open living area and spacious U-shaped kitchen with a breakfast bar that opens to the dining room.

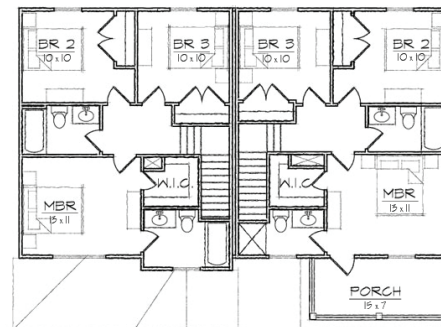
Both plans contain a total of three bedrooms, two full bathrooms, a powder room, and first floor laundry room.

The Queen Anne inspired exterior offers a hip roof and full front porch on the left and a gabled first and second floor porch on the right. Both units have a covered rear porch and exterior storage room.

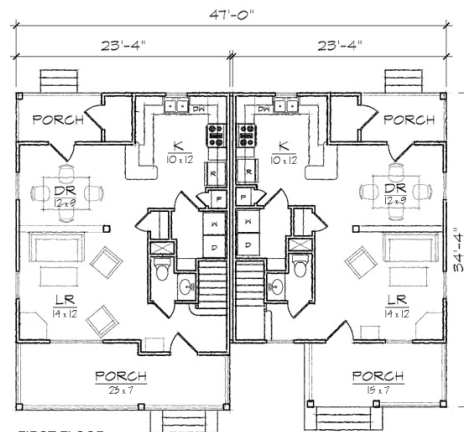
Modifications available upon request.

Specifications

bedrooms: **3** square footage: **2360** roof pitch: **8/12**
 bathrooms: **2.5** 1st floor ceiling: **9'** width: **47'**
 stories: **2** 2nd floor ceiling: **8'** depth: **34' 4**



SECOND FLOOR



FIRST FLOOR