

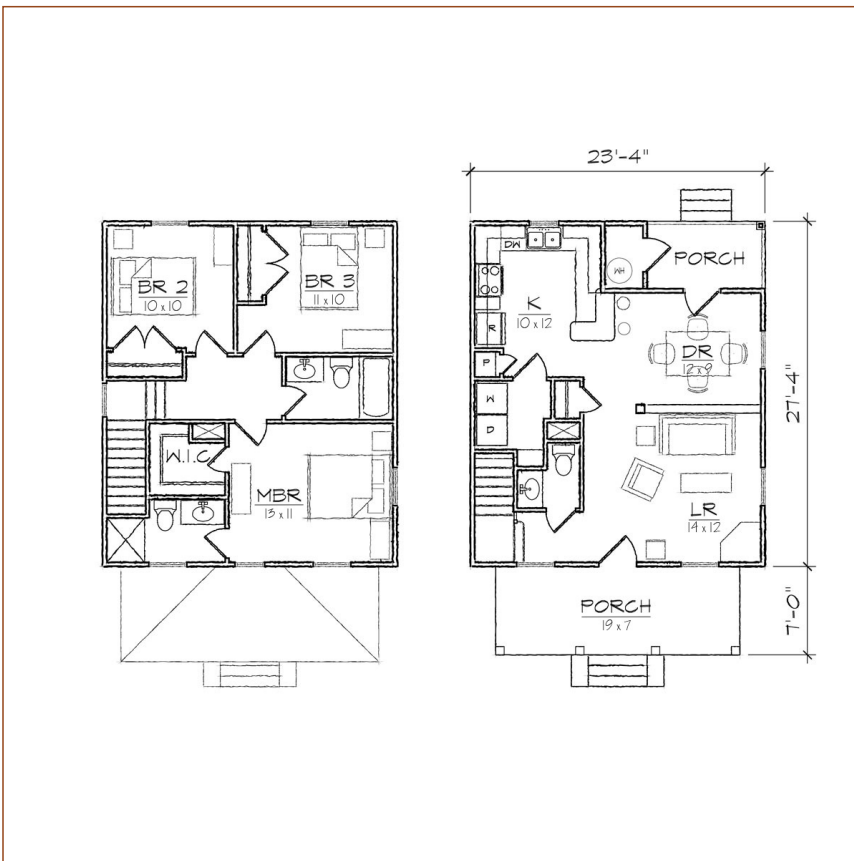
TightLines Designs

creating great places to live



Four Square I

square footage.	1167 sq ft
bedrooms.	3
bathrooms.	2
stories.	2
width.	23' 4"
depth.	34' 4"
1st floor ceiling height.	9' 0"
2nd floor ceiling height.	8' 0"
roof pitch.	8/12



This classic two story Prairie style house of 1167 square feet features a large open living and dining area, spacious kitchen, a private master bedroom suite, and includes a total of three bedrooms, two full bathrooms, a laundry room, a powder room and U-shaped kitchen with a breakfast bar that opens to the dining room. The Craftsman inspired exterior offers a hip roof with a dormer, a full front porch covered with a hip roof, a covered rear porch, and exterior storage room. At 23'-4" in width it is ideally suited for a narrow lot.

*Contact us for more information on handicap, basement, garage, foundation, or framing modifications.