



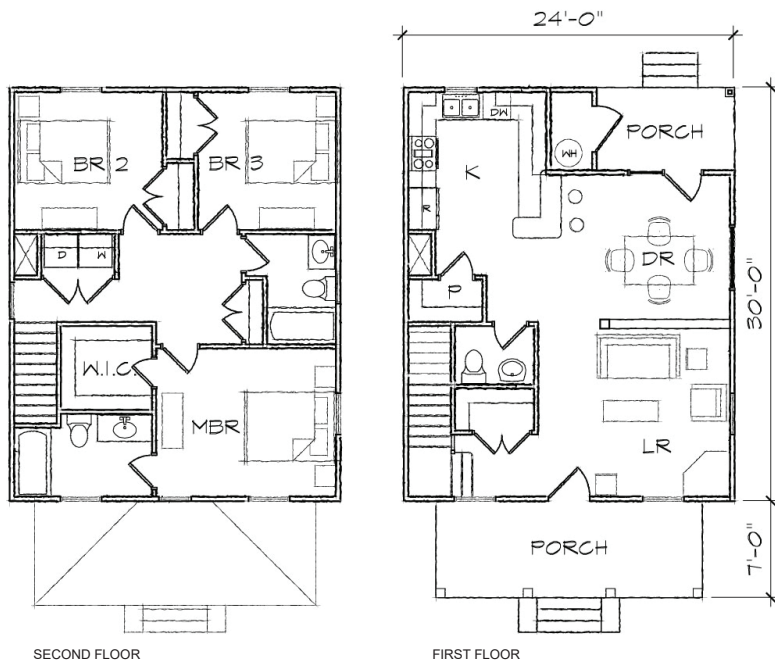
## Four Square II

This classic two story Prairie style house of 1335 square feet features a large open living and dining area, spacious kitchen, and a private master bedroom suite.

The plan includes a total of three bedrooms, two full bathrooms, a laundry room, a powder room and U-shaped kitchen with a breakfast bar that opens to the dining room.

The Craftsman inspired exterior offers a hip roof with a dormer, a full front porch covered with a hip roof, a covered rear porch, and exterior storage room. At 24'-0" in width it is ideally suited for a narrow lot.

*Also available: Four Square I, Four Square III.  
Modifications available upon request.*



### Specifications

bedrooms: **3** square footage: **1335** roof pitch: **8/12**  
 bathrooms: **2.5** 1st floor ceiling: **9'** width: **24'**  
 stories: **2** 2nd floor ceiling: **8'** depth: **37'**