

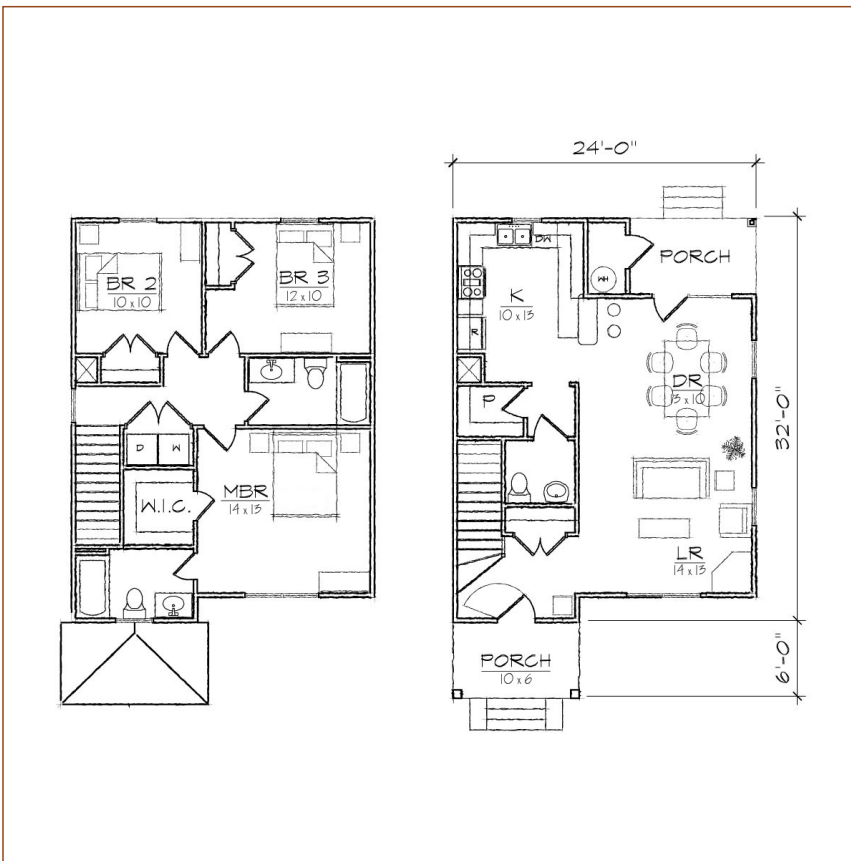
# TightLines Designs

creating great places to live



## Fredrick II

square footage. . . . .	1364 sq ft
bedrooms. . . . .	3
bathrooms. . . . .	2.5
stories. . . . .	2
width. . . . .	24' 0"
depth. . . . .	38' 0"
1st floor ceiling height. . . . .	9' 0"
2nd floor ceiling height. . . . .	8' 0"
roof pitch. . . . .	8/12



This two story turn of the century style house of 1364 square feet features a large open living and dining area, a spacious kitchen, a private master bedroom suite, and includes a total of three bedrooms, two full bathrooms, a laundry room, a powder room and U-shaped kitchen with a breakfast bar that opens to the dining room. The Queen Anne inspired exterior offers a dutch gable roof, a covered front porch with a hip roof, covered rear porch and exterior storage room. At 24' ft in width, it is ideally suited for a narrow lot.

\*Contact us for more information on handicap, basement, garage, foundation, or framing modifications.