

# TightLines Designs

creating great places to live



## Hinsdale I

This single story bungalow style house of 1121 square feet features large living and dining areas with optional trayed ceilings and a private master bedroom suite.

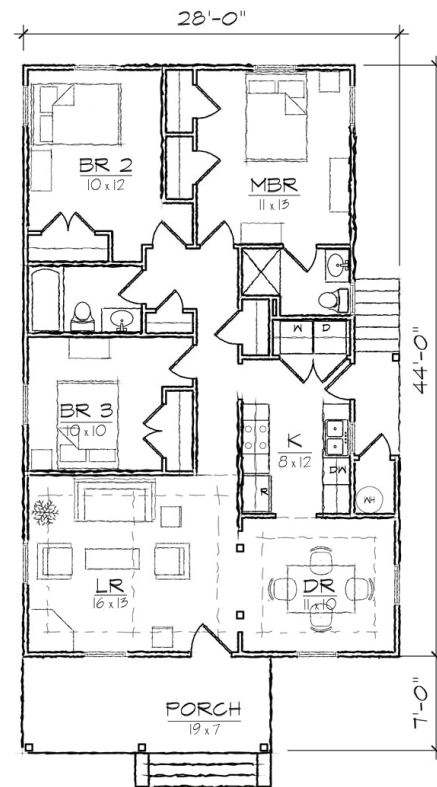
The plan includes a total of three bedrooms, two full bathrooms, a laundry area, and centralized kitchen that opens to the dining room.

The Craftsman inspired exterior offers a double gabled roof, covered front and side porches, and exterior storage room.

*Also available: Hinsdale 2BR.  
Modifications available upon request.*

### Specifications

bedrooms: <b>3</b>	square footage: <b>1121</b>	roof pitch: <b>7/12</b>
bathrooms: <b>2</b>	1st floor ceiling: <b>9'</b>	width: <b>28'</b>
stories: <b>1</b>		depth: <b>51'</b>



FLOOR PLAN