

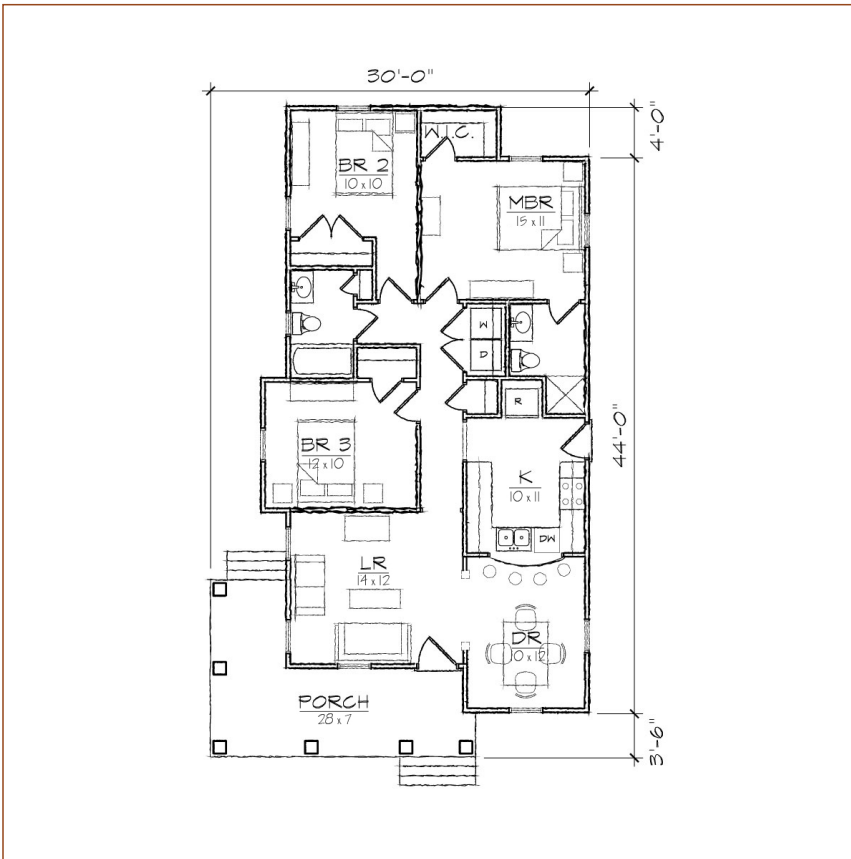
# TightLines Designs

creating great places to live



## Juniper I

square footage. . . . .	1096 sq ft
bedrooms. . . . .	3
bathrooms. . . . .	2
stories. . . . .	1
width. . . . .	30' 0"
depth. . . . .	51' 6"
1st floor ceiling height. . . . .	9' 0"
roof pitch. . . . .	9/12



This single story bungalow style house of 1096 square feet features a large living room and separate dining room as well as a private master bedroom suite. This house includes a total of three bedrooms, two full bathrooms, a laundry area and U-shaped kitchen with a breakfast bar that opens to the dining room. The Craftsman inspired exterior offers a double gabled roof, and a wrap-around front porch with a side gable.

\*Contact us for more information on handicap, basement, garage, foundation, or framing modifications.