

# TightLines Designs

creating great places to live



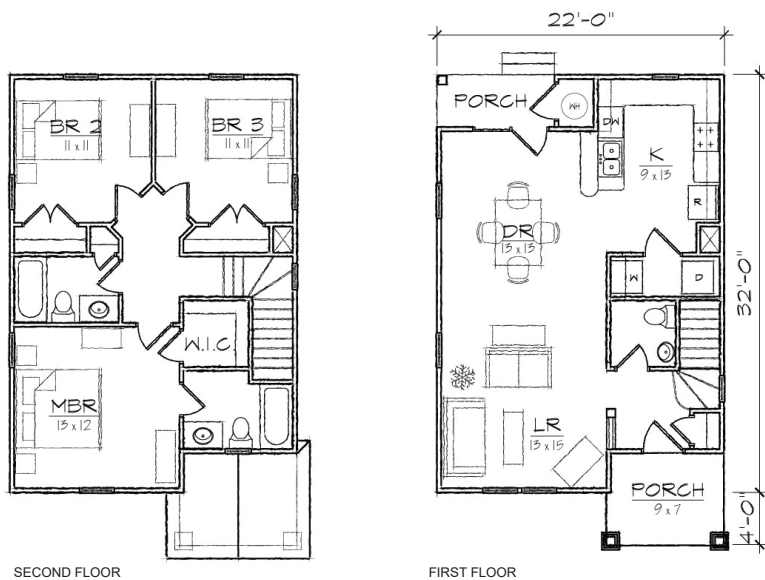
## Martin II

This two story Queen Anne style house of 1269 square feet features a spacious living and dining room area and a private master bedroom suite with a walk-in closet.

This open floor plan includes a total of three bedrooms, two full bathrooms, a powder room, a laundry room, and U-shaped kitchen with a breakfast bar that opens to the dining room.

The historically inspired exterior offers a dutch gabled roof, covered front and rear porches, and exterior storage room.

Also available: *Martin I, Martin III.*  
 Modifications available upon request.



### Specifications

bedrooms: **3**    square footage: **1269**    roof pitch: **8/12**  
 bathrooms: **2.5**    1st floor ceiling: **9'**    width: **22'**  
 stories: **2**    2nd floor ceiling: **8'**    depth: **36'**