

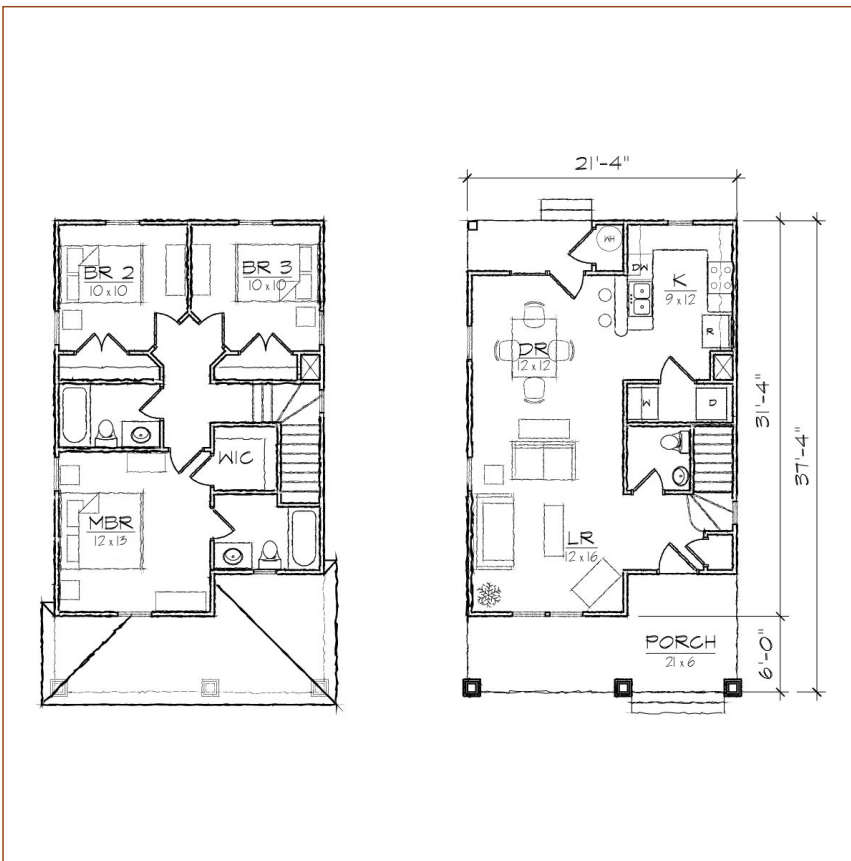
# TightLines Designs

creating great places to live



## Monique I

square footage. . . . .	1190 sq ft
bedrooms. . . . .	3
bathrooms. . . . .	2.5
stories. . . . .	2
width. . . . .	21' 4"
depth. . . . .	37' 4"
1st floor ceiling height. . . . .	9' 0"
2nd floor ceiling height. . . . .	8' 0"
roof pitch. . . . .	8/12



This two story Queen Anne style house of 1190 square feet features a spacious living and dining room area and a private master bedroom suite with a walk-in closet. This open floor plan includes a total of three bedrooms, two full bathrooms and a powder room, a laundry room and U-shaped kitchen with a breakfast bar and opens to the dining room. The historically inspired exterior offers a main hip roof with a shingle accented front gable, a covered front and rear porch, and exterior storage room. At 21'-4" in width it is ideally suited for a narrow lot.

\*Contact us for more information on handicap, basement, garage, foundation, or framing modifications.