

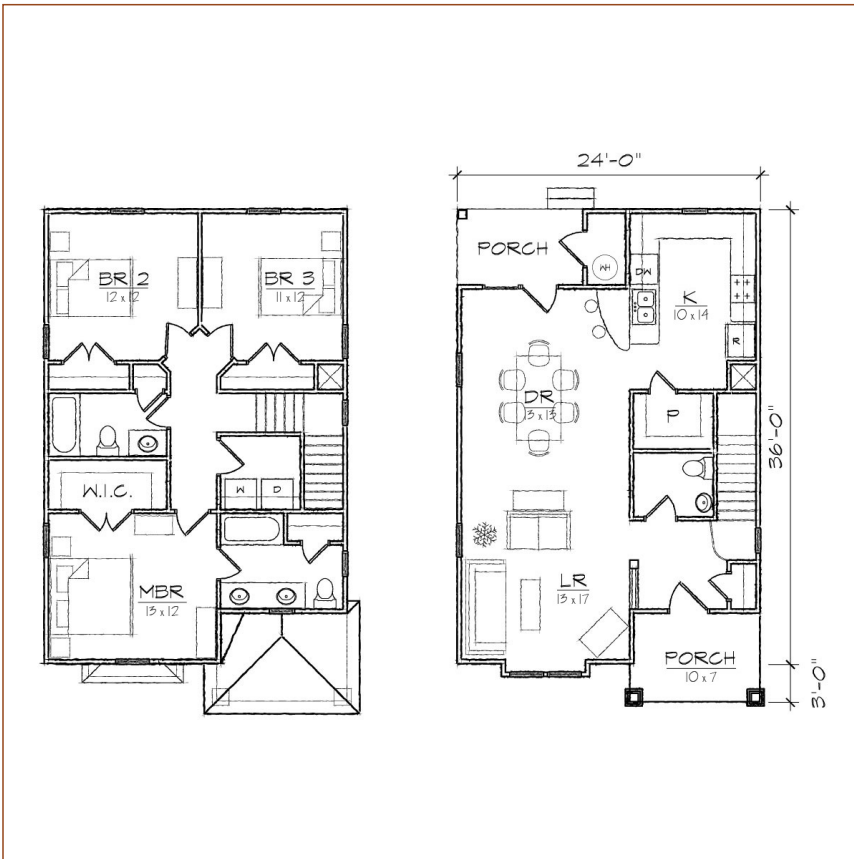
TightLines Designs

creating great places to live



Myrtle III

| | |
|-----------------------------------|------------|
| square footage. | 1522 sq ft |
| bedrooms. | 3 |
| bathrooms. | 2.5 |
| stories. | 2 |
| width. | 24' 0" |
| depth. | 39' 0" |
| 1st floor ceiling height. | 9' 0" |
| 2nd floor ceiling height. | 8' 0" |
| roof pitch. | 8/12 |



This two story Queen Anne style house of 1522 square feet features a spacious living and dining room area and a private master bedroom suite with a walk-in closet. This open floor plan includes a total of three bedrooms, two full bathrooms and a powder room, laundry room and U-shaped kitchen with a breakfast bar and opens to the dining room. The historically inspired exterior offers a double hip roof, a first floor projecting bay, a covered front and rear porch and exterior storage room.

*Contact us for more information on handicap, basement, garage, foundation, or framing modifications.