

# TightLines Designs

creating great places to live



## Warren I

This single story Folk Victorian style house of 1118 square feet features a spacious living room, separate dining area, and a private master bedroom suite with double closets.

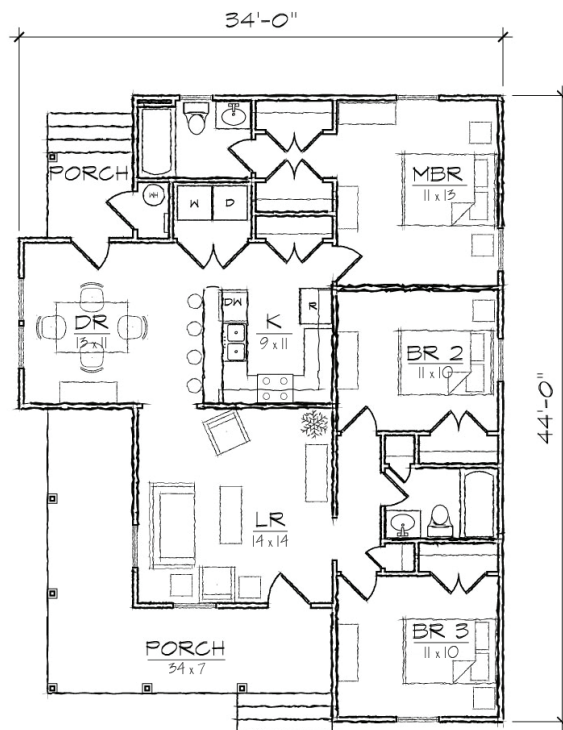
This open floor plan includes a total of three bedrooms, two full bathrooms, a laundry area, and a centralized U-shaped kitchen with a breakfast bar that opens to the dining room.

The historically inspired exterior offers a hip roof with side gables, wrap around front porch, covered rear porch, and exterior storage room. This design is ideal for a corner lot.

*Also available: Warren 2BR, Warren II, Warren III.  
Modifications available upon request.*

### Specifications

bedrooms: <b>3</b>	square footage: <b>1118</b>	roof pitch: <b>8/12</b>
bathrooms: <b>2</b>	1st floor ceiling: <b>9'</b>	width: <b>34'</b>
stories: <b>1</b>		depth: <b>44'</b>



FLOOR PLAN