

TightLines Designs

creating great places to live



Whitney III

This single story Folk Victorian style house of 1557 square feet features a spacious living room, separate dining area, and a private master bedroom suite with double closets.

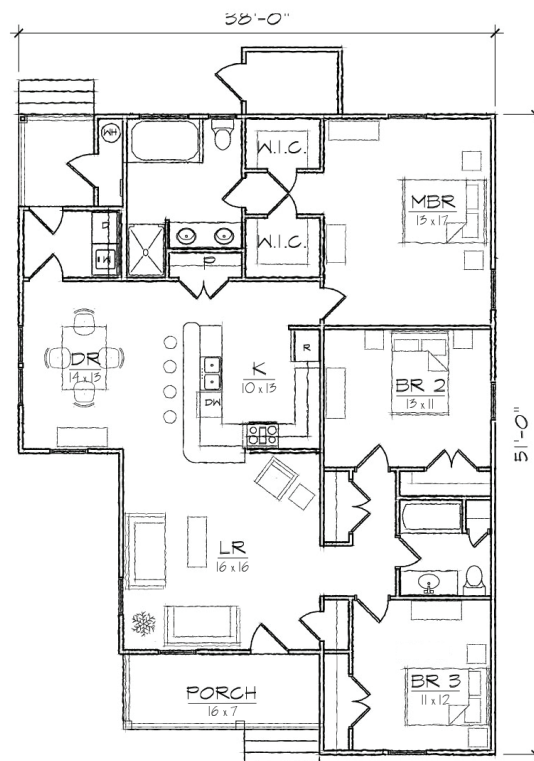
This open floor plan includes a total of three bedrooms, two full bathrooms, laundry area, and centralized U-shaped kitchen with a breakfast bar that opens to the dining room.

The historically inspired exterior offers a double gable roof with a side gable, covered front and rear porches, and exterior storage room.

Also available: Whitney I, Whitney II.
Modifications available upon request.

Specifications

bedrooms: **3** square footage: **1557** roof pitch: **8/12**
 bathrooms: **2** 1st floor ceiling: **9'** width: **38'**
 stories: **1** depth: **51'**



FLOOR PLAN