

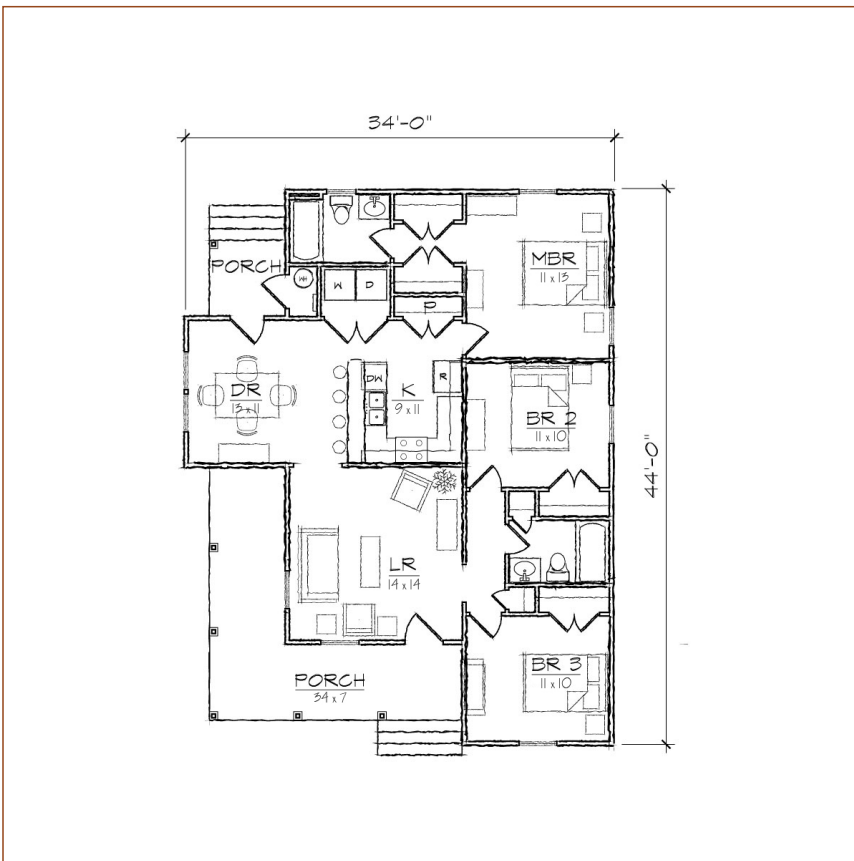
TightLines Designs

creating great places to live



Winslow I

| | |
|-----------------------------------|------------|
| square footage. | 1118 sq ft |
| bedrooms. | 3 |
| bathrooms. | 2 |
| stories. | 1 |
| width. | 34' 0" |
| depth. | 44' 0" |
| 1st floor ceiling height. | 9' 0" |
| roof pitch. | 8/12 |



This single story Folk Victorian style house of 1118 square feet features a spacious living room, separate dining area and a private master bedroom suite with double closets. This open floor plan includes a total of three bedrooms, two full bathrooms, laundry area and centralized U-shaped kitchen with a breakfast bar that opens to the dining room. The historically inspired exterior offers a double gable roof with a side gable, wrap around front porch, covered rear porch, and exterior storage room. This design is ideal for a corner lot.

*Contact us for more information on handicap, basement, garage, foundation, or framing modifications.