

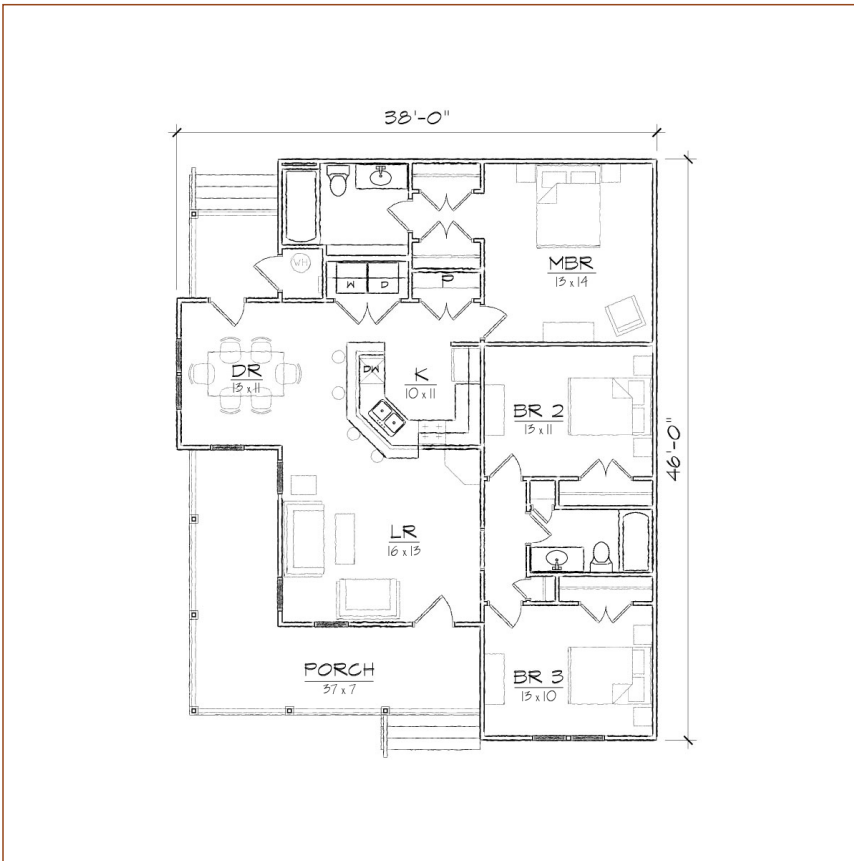
TightLines Designs

creating great places to live



Winslow II

square footage.	1318 sq ft
bedrooms.	3
bathrooms.	2
stories.	1
width.	38' 0"
depth.	46' 0"
1st floor ceiling height.	9' 0"
roof pitch.	8/12



This single story Folk Victorian style house of 1318 square feet features a spacious living room, separate dining area and a private master bedroom suite with double closets. This open floor plan includes a total of three bedrooms, two full bathrooms, laundry area and centralized U- shaped kitchen with a breakfast bar that opens to the dining room. The historically inspired exterior offers a double gable roof with a side gable, wrap around front porch, covered rear porch, and exterior storage room. This design is ideal for a corner lot.

*Contact us for more information on handicap, basement, garage, foundation, or framing modifications.