

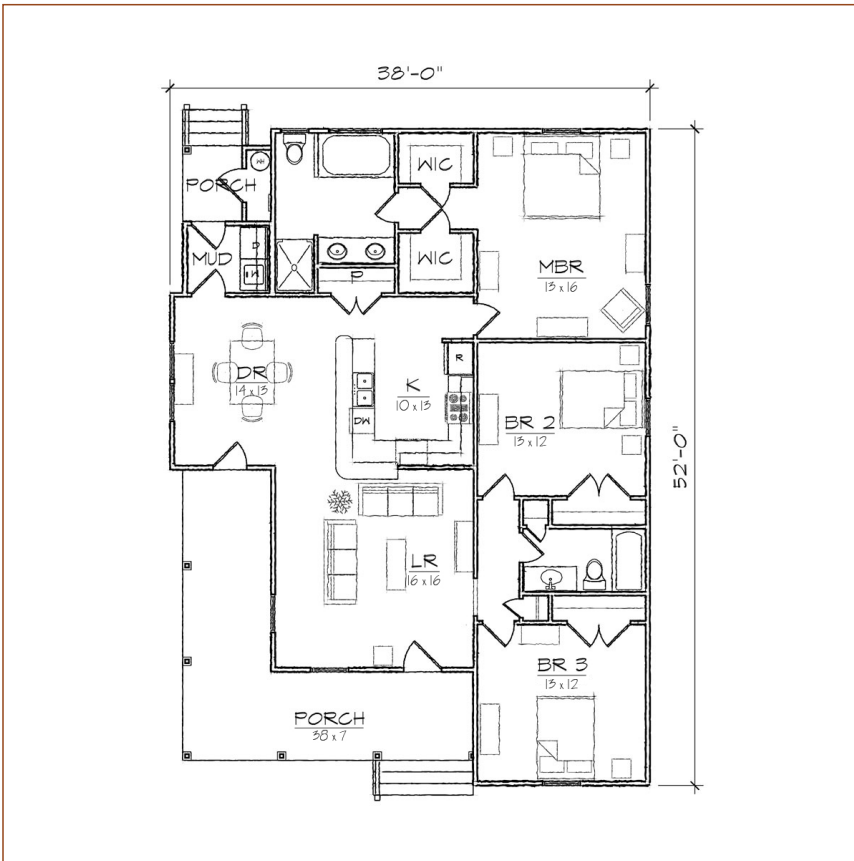
# TightLines Designs

creating great places to live



## Winslow III

square footage. . . . .	1568 sq ft
bedrooms. . . . .	3
bathrooms. . . . .	2
stories. . . . .	1
width. . . . .	38' 0"
depth. . . . .	52' 0"
1st floor ceiling height. . . . .	9' 0"
roof pitch. . . . .	8/12



This single story Folk Victorian style house of 1568 square feet features a spacious living room, separate dining area and a private master bedroom suite with double closets. This open floor plan includes a total of three bedrooms, two full bathrooms, laundry area and centralized U- shaped kitchen with a breakfast bar that opens to the dining room. The historically inspired exterior offers a double gable roof with a side gable, wrap around front porch, covered rear porch, and exterior storage room. This design is ideal for a corner lot.

\*Contact us for more information on handicap, basement, garage, foundation, or framing modifications.